

# DJ2400

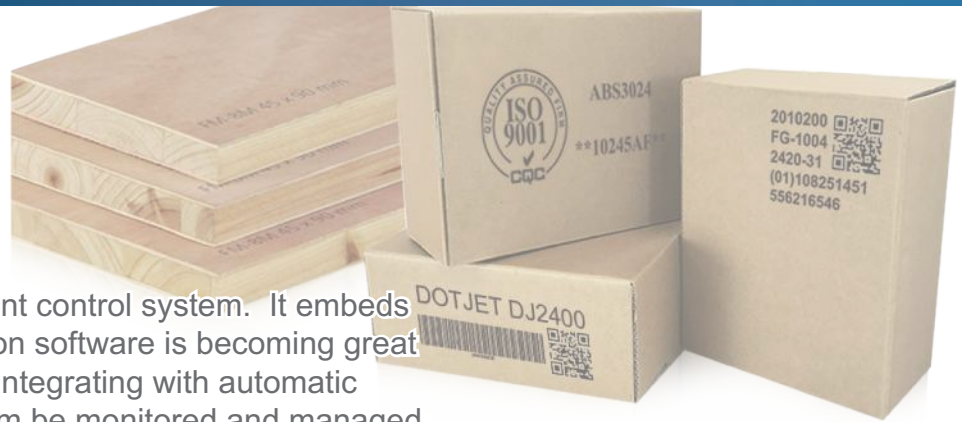
► *Large character high resolution piezo*



Dotjet DJ2400 printing system can run up to four printheads from a single touchscreen controller. 180 or 360 dpi print resolution meets your application needs for razor-sharp text, scannable bar codes, and great looking logos. The DJ2400 is capable of running oil-based or UV curable inks to print on a variety of substrates.

**High-Resolution  
Inkjet Printer**

## FEATURE



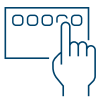
“ DJ2400 has an intelligent control system. It embeds a cloud version operation software is becoming great versatility, capability of integrating with automatic potential, printing system be monitored and managed remotely, it represents the coding and marking demand of next generation. ”



A 12" full color touchscreen with WYSIWYG user-friendly software with free design capabilities provides even a beginner can quickly and efficiently to build-up a print job and manage printing.



Fulfill the demand for automatic integration, connectivity of data-base printing, multiple interfaces connection, print data uploading into cloud and remote printer management.



Implementation of international symbol sets and software operation interface for global marking



3 levels password protection/user, administration, manager.



GS1 Barcode compliance.



4 print modules control capability

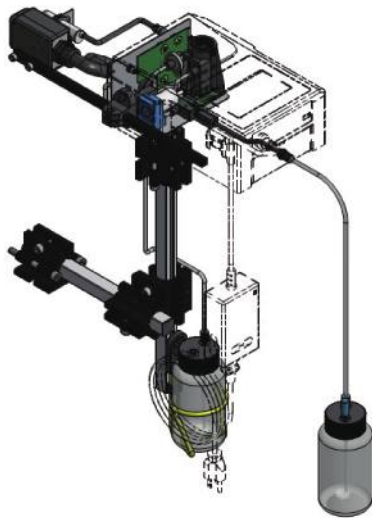


# Inkjet System

The DJ2400 inkjet system has been designed using the latest innovations in the print head module.

“All-in-one-module”, Wide 5” touch screen display, ink-system and print-head with an umbilical cable. A DJ2400 controller can control 4 sets of the print modules.

5” touch screen gives user can quick operate the ink system to fulfill quick prime, ink drainage and print head self-cleaning.



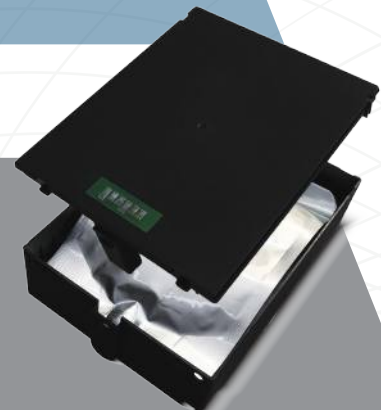
Bulk ink supply design provide the less downtime in production, no printer shutdown required at ink change.

Two different models by equipping 18mm or 72mm print engine



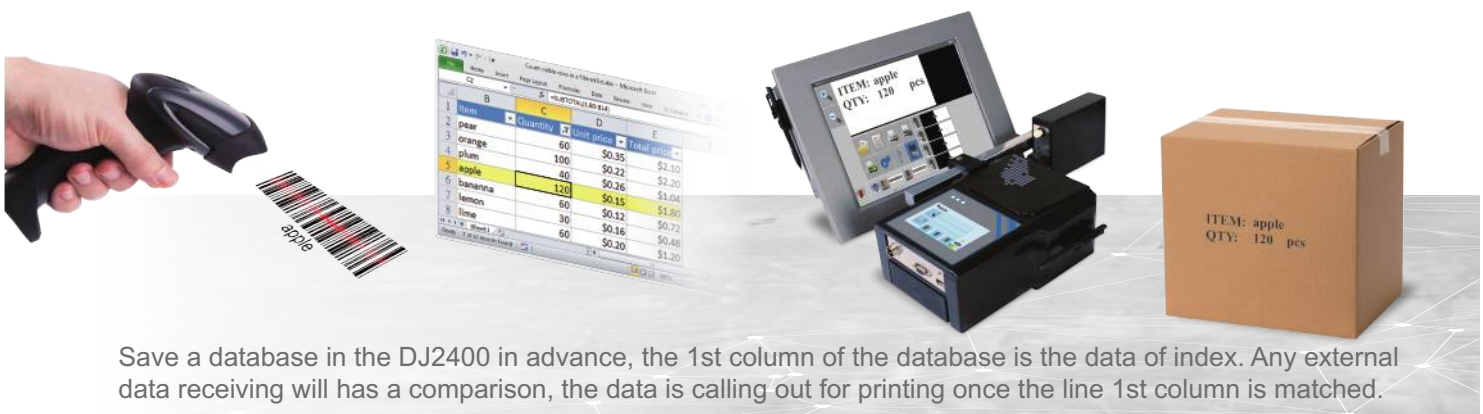
One button to purge and clean the print head nozzle, waste ink be collected automatically, maintain print quality in good condition and 100% mess-free.

- ▶ Dotjet utilizes oil-based or uv-curable inks for printing on a wide range of porous and non porous surfaces.
- ▶ Security chip built on the ink cartridge to protect ink usage from third-party.
- ▶ 250ml ink cartridges offer simple and clean ink changes.



# Communication Interface

DJ2400 provides different connection interfaces TCP/IP, USB, RS232 can be easily integrated to your production area implement external data printing.



# Database Printing

High-speed list prints from database, plug and play USB stick data transfer and provides access easily manipulate MySQL data.



# Network Printing

Communication via Protocol

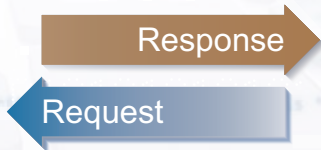
DJ2400 contains a network interface and protocol that allows host system to connect. Print jobs are sent directly from host systems to the printer without requiring an intervening host. Ideally suited for serialization and track & trace applications. A simulation software DJ\_Link developed by Dotjet team assists you to get through the application with no barrier, please contact us.

# “Versatility in Connectivity”

Transfer of external data, or triggering of active fields for fast and secure data transfer.

Monitoring all operational statuses via protocol function.

DB print for variable data printing.



System

```

%endit // Z_PHONE_SLED
destination[axis] = 1.5 * max_length[axis] * axis_home_dir;
feedrate = homing_feedrate[axis];
plan_buffer_line(destination[X_AXIS], destination[Y_AXIS], destination[Z_AXIS], destination[E_AXIS], feedrate/60, active_

```

# Remote control & monitor multiple printers

The DotW\_CM software developed by Dotjet team is print station oriented allows the user to easily connect to DJ2400 PIJ printers. Print messages can be created from one main print station and then sent to printers using an Ethernet connection or Wifi. It also available for monitoring the status of all connected print systems give you transparency into your packaging line operation. DotW\_CM features automatic printer detection that allows the software to find all Dotjet printers connected to the network.



Status window on mobile devices with indication of all operational statuses, ink levels and current printing label.



Clear display of all connected print systems.



Start/stop of printing. Set-up of printing parameters and configuration of print systems.

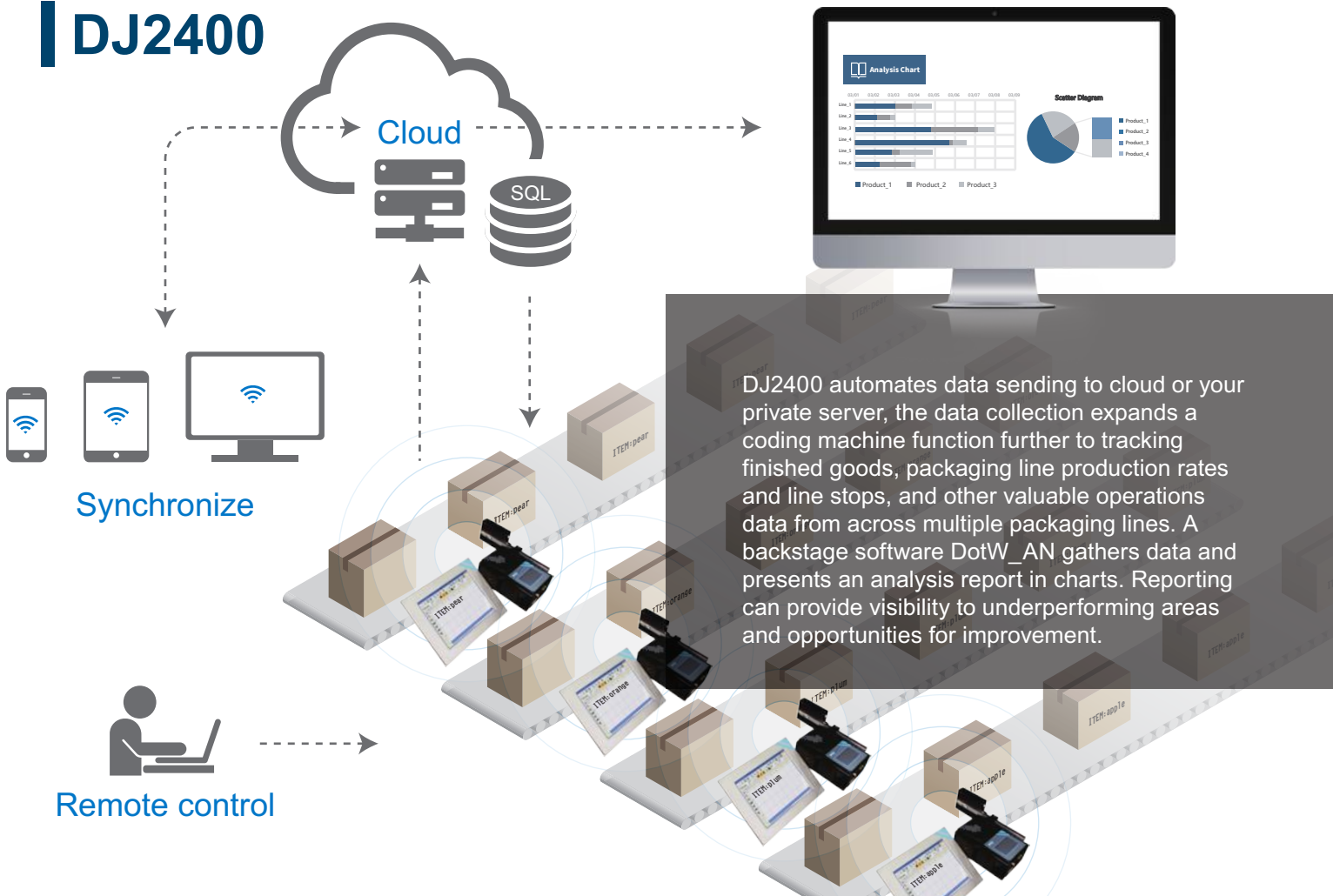


Administrating and creating print message.



Remote sending database, image file and print template to printers in connectivity.

## DJ2400



Technology	Xaar & SII Piezoelectric technology
Power supply	AC110-220V, 50/60HZ
Display	Controller : 12" full color LCD touch screen display Print Head System : 4.3" color LCM module (Touch Screen)
Operating temperature range	5°C ~45°C (41°F - 113°F)
Message storage	Up to 1000 messages
Built-in message storage capacity	4GB SDD available for message storage, actual message size will vary based on content
Print head controlled ability	Four piezo-jet print heads, available for combination of 128 and 510 heads.
Maximum print height	18mm for PT128 head 72mm for PT510 head
Print lines	Multiple lines depending upon the print character size
Message length	Maximum to 1024mm
Length data line	Controller to print head control unit & ink delivery system - 5m Print head control unit & ink delivery system to print head - 80cm
Print resolution	180 dpi
Printing orientation	Horizontal and vertical printing
Distance to print Surface	Maximum 6.5mm (0.25 inches)
Print speed	Up to 98 feet/min (30m/minute) at 180dpi with 128 80pl print head Up to 197 feet/min (60m/minute) at 180dpi with 128 40pl print head Up to 148 feet/min (45m/minute) at 180dpi with 510 50pl print head Up to 197 feet/min (60m/minute) at 180dpi with 510 35pl print head
Print capability	Alphanumeric of full true type fonts. Scalable text; rotation, mirror and inverse printing. Automatic time and date functions. Automatic best-before date calculation. Automatic incrementing & decrementing batch counting and Lot-Box code. Auto repeat printing. Graphic format supported using 1 bit bitmap file (*.bmp) 16 programming shift codes with automatic rollover. GS1 barcodes / 2D codes. External data connectivity print. Database print.
Database print format	CSV
External data communication interface	RS232, USB, Ethernet, TCP/IP
Particular features	MySQL database, Print data collection, Protocol control, Image in database, Multiple printer remote control by DotW_CM software
Ink usage	Oil and UV curing inks
Ink supply	250ml ink cartridge. 500ml bulk ink supply is optional
Dimension (L/W/H)	Controller 345 x 260 x 76 (mm) / 13.4 x 10.2 x 3 (inches) Print head & Ink delivery system 160 x 450 x 140 (mm) / 6.3 x 17.7 x 5.5 (inches)
Optional	Encoder, bulk ink supply, Backstage analysis/manage software



**Dotjet Inc.**



[www.dotjet.com](http://www.dotjet.com)



[info@dotjet.com](mailto:info@dotjet.com)



+886 4 2338 7066



No.10 Gaotie 2nd Rd., Wuri Dist., Taichung City, 414012 Taiwan