

DJ45x

► hp *TIJ2.5 Inkjet coder*



- A user-friendly software design leaves no difficulty to operate the printer
- Capability to print various GS1 barcodes
- High resolution quality up to 600 dpi x 600 dpi, Standard: 300 dpi x 300 dpi
- Ink types for different substrates
- Robust printhead made of milled and anodized aluminum.
- Two options for printhead accessory:
 - ◆ Anti-shock mechanism
 - ◆ Fine-adjustment mechanism
- Bulk-ink supply is optional

Diverse Installations

- Printhead equipped with a rotatable bracket to adjust printhead direction



- External photosensor can be flexibly mounted for product sensing



- Able to connect to 2 printheads



Printhead Accessory Options

- **Fine-Adjustment Mechanism**

To make the print distance to an object as close as possible.



- **Anti-Shock Mechanism**

To ensure the printing quality if any object on conveyor hits the printhead.



Controller Operation

- 1 7" full-color touch screen to operate the controller
- 2 Printing messages can be created by DJ45x controller directly. It can also be created by PC software then be transfer to DJ45x controller via a USB stick.
- 3 External alarm box for low ink warning
- 4 Printhead data line up to 2 meters



User-Friendly Interface

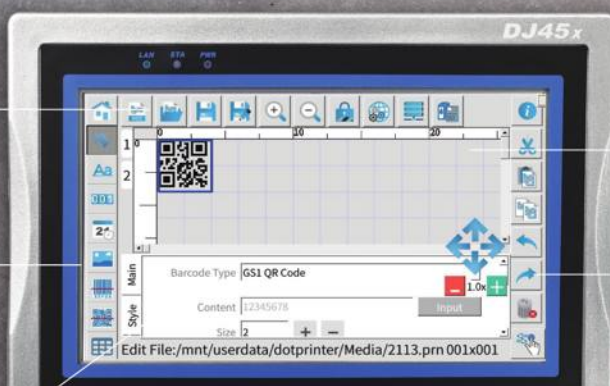
File tools, ink consumption calculator and more setting.

Select message objects (text, image...)

Edit the content and adjust formats, such as sizes, fonts, thickness, barcode types.

Click or drag an object to the target location on the preview section.

Edit to cut, copy, delete, toolsetc.



WYSIWYG interface helps beginners build up and manage print jobs quickly and efficiently.

Main Sections

Printing status displaying: printing direction, trigger times, etc.

Remaining ink quantity

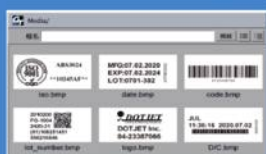
Preview of current print job

Print Job Functions: Tool, Edit and Setup



Few steps for daily print job

1 Open File from DJ45x



2 Edit/Create Printing Message



3 Setup printing parameters



4 Start printing



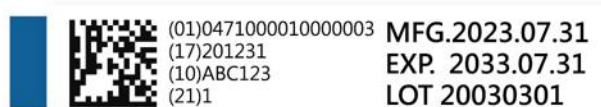
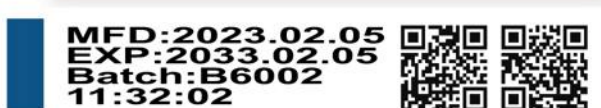
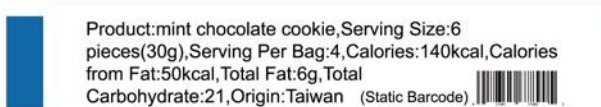
PC Software: DotW_QTPC

- An alternative to create mass printing messages.
The files can be saved into a USB stick and then transferred to a DJ45x controller.
- Flexibility of print template design



Print Message Content

- Alphanumeric, logos, date/time, shift code, serial number, lot/box number, GS1 linear barcode & 2D code, multiple-language characters.
- Adjustable print height up to 12.7 mm



Operation

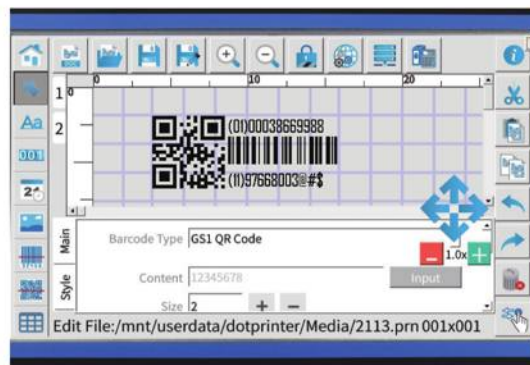
- Zoom in and zoom out preview of print job



- **TrueType Fonts:**
any TrueType font (.ttf) files can be installed into the DJ45x controller.



- Template grid line allows to arrange the layout in order



- **Select Right File:**
Users can see the preview of printing message files which displays on <Open File> section.



Print Job Management

- Message storage about 1,000 print messages



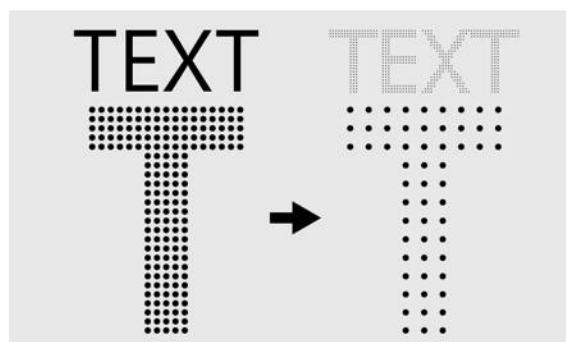
- Ink consumption calculator for each print message



- Rotate or flip characters



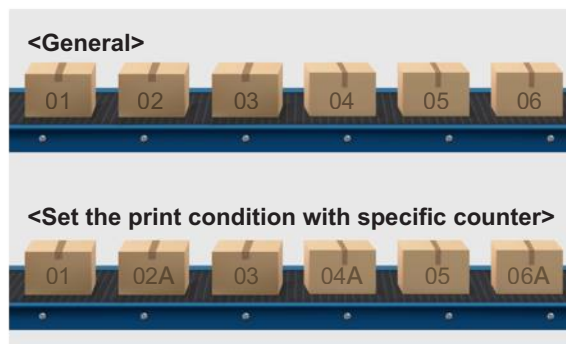
- Ink saving function



- Letter spacing adjustment



- Add characters after a counter object

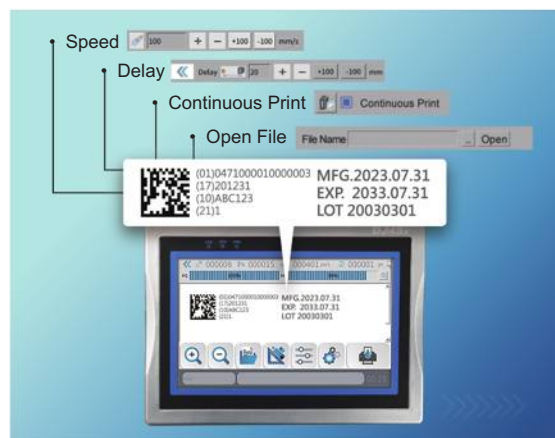


More Software Functions

- **<Side 1= Side 2>** function can copy a print message to another printhead directly when using dual-printhead installation.



- **<Read from File>** function:
The printing parameters are kept along with the print job for future use.

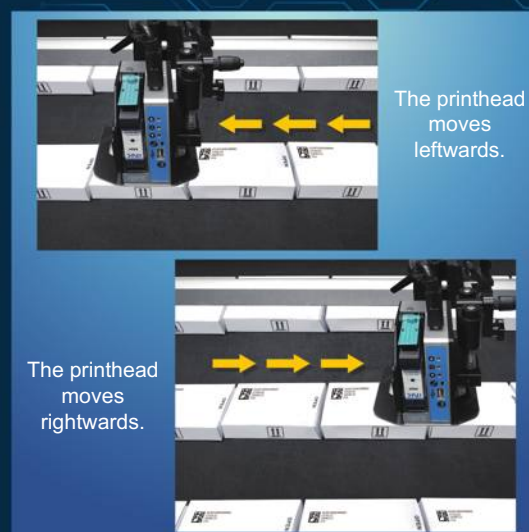


Print Control

- Change the print job during printing



- Traversing function with XY movement mechanism



- Speeding printing with a lower resolution



- 3-level password protection to lock specific functions, such as editing print message content and system settings.



Printhead and Low Ink Warning

- Low-ink LED indicator on printhead panel



- Support external alarm box and beacon light for low-ink warning or other fault warnings. Additional accessories must be purchased.



Ink Cartridge

- Disposal ink cartridge, clean and easy to use
- No smelly ink diluent is required
- Low consumables usage, maintenance free
- Print speed can be up to 60 m/ min with aqueous-based ink and 90 m/min with solvent-based ink

• Ink types:

- ✓ Aqueous ink
- ✓ Solvent ink
- ✓ UV-curable ink

HP TIJ 2.5 technology

A clean cartridge system ensures the best cartridge lifetime and keeps uptime.



Smart Card



A smart card on each ink cartridge stores the parameters information. Once the ink cartridge is installed in the printhead, the printer will read if the ink cartridge is from the authorized source.

The printer controller reads and downloads the parameters automatically to save user's time to set up printing parameters manually.

Bulk Ink Supply

Bulk ink supply system is an ideal option to help users reduce the number of time to change over ink cartridge. Some accessories must be purchased to be equipped with the bulk ink supply system.



- Aqueous-based ink, 370ml (K710-bulk)

SPECIFICATIONS

Model	DJ45x
Technology	hp TIJ2.5
Power requirement	AC110-220V, 50/60HZ
Display	7" Color LCD with LED back light
Operation temperature	5°C-45°C (41°F-112°F)
Controller operating system	Linux
Message Storage	Up to 1,000 messages
Printhead controlled ability	Two hp TIJ2.5 printheads
Print line	Multiple depend on character size
Print height	Up to 12.7 mm
Print speed	Aqueous ink: max 60 meters/ per minute Solvent ink: max 90 meters/ per minute
Max print length	1 meter
Printing resolution	300 x 300 dpi
Ink throw distance	6mm is recommended
LED indicators	Low ink, print on/ off
Print capability	Alphanumeric, logos, date/time, shift code, serial number, lot/box number, GS1 barcodes/2D code, table, database and multiple languages characters print
User interface	WYSIWYG. Multiple languages available (some may need translation support)
Printhead data line	Standard 75cm and 200cm. Longer cable is optional
Weight	Controller: 820g (excluding bracket) Printhead: 380g (excluding cartridge and bracket)
Dimension (L/W/H)	Controller: 205x140x68 mm / 8.1x5.5x2.7 inches Printhead: 130x115x94 mm / 5.1x4.5x3.7 inches
Optional	Encoder, bulk ink supply, external low ink alarm

